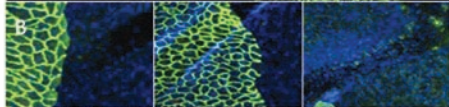
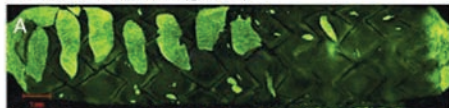




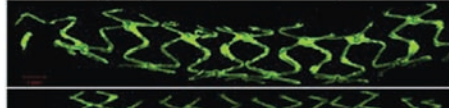
Research

CVPath Institute's research program is well recognized in the field of cardiology through publications in prominent scientific journals and presentations at medical conferences. A major research interest of CVPath is the characterization of fatal atherosclerotic plaques through the use of laboratory tools such as imaging, immunohistochemistry, RNA, DNA, and protein analysis. Furthermore, our continued development of relevant animal models of human cardiovascular disease enables the innovation of new technologies and therapies. The medical knowledge gained from the various cardiovascular studies conducted at CVPath is instrumental for the translation of new therapies from the laboratory into daily clinical practice.

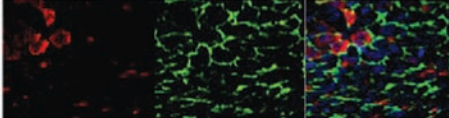
Endothelialization (green)



Platelet Aggregation (shunt model)



Paclitaxel CD31 Merged



Clinical Diagnosis

Our CAP-accredited and CLIA-approved laboratory can help you meet your diagnostic and clinical research trial pathology needs. We offer diagnostic services for autopsy and surgical human specimens.

Preclinical Services

CVPath Institute engages in collaborative research with investigators to design, improve, and evaluate interventional devices as a prelude to clinical studies. CVPath assists companies in the development of preclinical research plans to meet scientific and regulatory requirements. The Institute can also provide the consultative support necessary for 510K or IDE approvals of devices.

CVPath Institute has experience with a broad spectrum of preclinical-stage medical technologies ranging from cerebral to below-the-knee vasculature, truly encompassing the entire anatomy.

Cerebral

Aneurysm repair & prevention devices and ischemic stroke intervention devices

Carotid

Nitinol stents and filter devices

Aorta

Grafts, stent grafts

Structural Heart

Valves (aortic, mitral, tricuspid, and pulmonary valve technologies); myocardium (atrial septal & appendage devices, ventricular assist devices, cell therapy, pacing leads, atrial fibrillation, RF, and cryoablation)

Coronary Arteries

Drug-eluting stents, bare metal stents, bioabsorbable scaffolds, and drug-coated balloons

Renal

Sympathetic nerve ablation

Peripheral Vascular

Iliac, SFA, popliteal (nitinol stents, bioabsorbable scaffolds, stent grafts, drug-coated balloons) below the knee peripheral stents and vascular access closure devices

Hemodialysis Access

AV shunt and stents

Non-vascular stents

Liver, biliary

Why CVPath Institute?

- Renowned researchers
- Most trusted authority on histopathology by government, academia, and private organizations
- Deep expertise in routine histology methods and innovators in cutting edge histology techniques
- True partner in device development and commercialization
- Turn key service: from prototype to regulatory approval and a dedicated project manager for each study



For more information, please contact:

Michael Joner, M.D.
CEO CVPath Institute Inc.
Tel: 301-208-3570, Ext 113

Renu Virmani, M.D.
President & Medical Director
Tel: 301-208-3570, Ext 100

Eric Wittchow, Ph.D.
Director of Translational Research
Tel: 301-208-3570, Ext 112

Harry Davis, Ph.D.
Chief Scientific Officer
Tel: 301-208-3570, Ext 104

CVPath Institute, Inc.
19 Firstfield Road
Gaithersburg, MD 20878

Tel: 301.208.3570
Fax: 301.208.3745
Email: info@cvpath.org

CVPath Institute At a Glance

Expertise

- 800 publications
- 1,000 presentations
- 100 medtech & pharma companies as past & present clientele

Device Development

- Develop and execute preclinical research plans
- Provide consultative support for 510K, IDE, and CE Mark approvals
- Fully CAP and GLP compliant facility

Histology

- Specialized plastics embedding for implants utilizing methyl methacrylate and glycol methacrylate epoxy embedding
- Paraffin and frozen histology
- Immunohistochemistry

Molecular Biology

- RNA/DNA/protein extraction
- Cell culture

Clinical

- Analyze human cardiovascular surgical, or autopsy specimens
- Unmatched biorepository of human cardiovascular disease and devices

Imaging

- Morphometry, confocal microscopy, scanning electron microscopy (SEM), transmission electron microscopy (TEM) energy dispersive spectrometry (EDS).

Clinical and Preclinical imaging

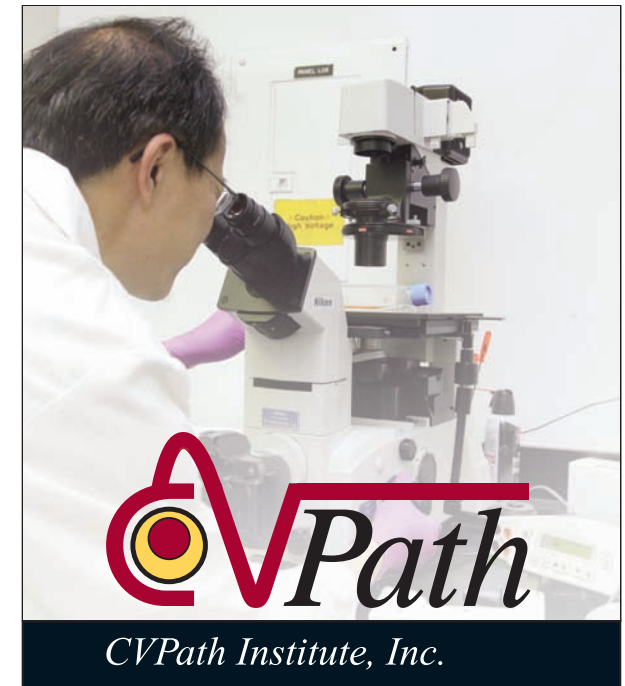
- Angiography, intravascular ultrasound, and optical coherence tomography



CVPath Institute, Inc.

19 Firstfield Road
Gaithersburg, MD 20878

Tel: 301.208.3570
Fax: 301.208.3745
Email: info@cvpath.org
www.cvpath.org



CVPath Institute is a leading medical research organization dedicated to improving patient health management for those suffering from cardiovascular diseases. Our mission is to conduct translational “bench to bedside” research. We provide consultation, histology, and diagnostic services to promote discoveries towards advancing treatments for cardiovascular and other diseases.

- RESEARCH
- CLINICAL DIAGNOSIS
- PRECLINICAL SERVICES

19 Firstfield Road • Gaithersburg • MD 20878
Tel: 301.208.3570 • www.cvpath.org